

"Out of the Ashes – What Survived the Great Fire of London?" (Art)

What I can remember

➤ My Stinky New School: Ernst Ludwig Kirchner (Y1)

Vocabulary

charcoal



graphite



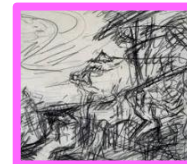
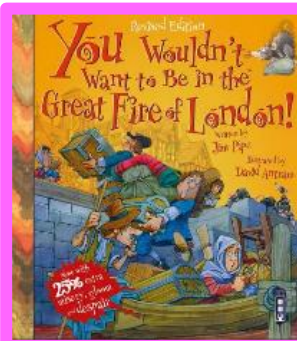
outline



smudging

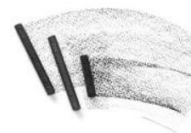


thickness



Big Ws

Charcoal sticks make **sweeping or thicker lines**. They are the easiest to **smudge**.



Charcoal pencils can make **thinner lines** but can make a **dark** black colour.



Graphite sticks create **softer lines**. You get different lines using the **tip** or the **side**.



Fine nibbed pens are used for **fine details** and a **darker, thinner line**. They **cannot be smudged**.

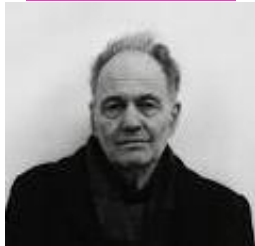


➤ There are **different tools** you can use to **smudge** charcoal and graphite.



Important People

Frank Auerbach



A German-British artist who uses **charcoal and graphite**. He draws **people and buildings**.

William Kentridge



A South African artist who uses **pastels and charcoal**. He draws **buildings**.



